

OPTIGO CONNECT EDGE SWITCHES

ONS-CD0840GP / ONS-C801pi / ONS-C1601pi
ONS-CR2420GT / ONS-CR2440XP / ONS-C4801p



A complete family of intelligent edge switches for a flexible and efficient building network

Optigo Networks Inc. unites information technology (IT) and operational technology (OT) with a networking solution that bridges the gap. Combined with Optigo OneView, an intuitive interface for simplified network management, Optigo Connect edge switches are perfectly suited to any OT network.

Optigo Connect edge switches power fully managed OT networks. They support a wide array of applications, with industrial- and commercial-grade models, support for PoE+¹, and a variety of port configurations. All Optigo Connect edge switch ports allow for port mirroring and are standalone capable.

Optigo OneView seamlessly manages Optigo Connect edge switches, providing immediate centralized management, with the ability to manage IP subnets, IP addresses, routing, port connectivity, and VLAN.

The Optigo Connect family of edge switches are fully compatible with existing IT and OT network infrastructure, making them an ideal choice for both new construction and retrofit projects.

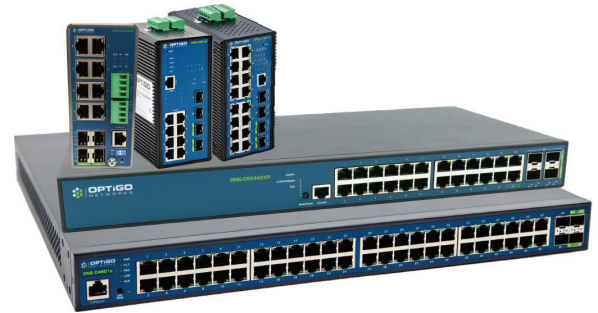
Commercial Switches (Rack Mounted)

These Gigabit Ethernet switches come with an internal power supply, and support PoE+¹ and network management.

Rack-mounted Optigo Connect switches are ideal for building a converged OT network using existing IT infrastructure (closet, rack, power, cooling).

Industrial Switches (DIN Mounted)

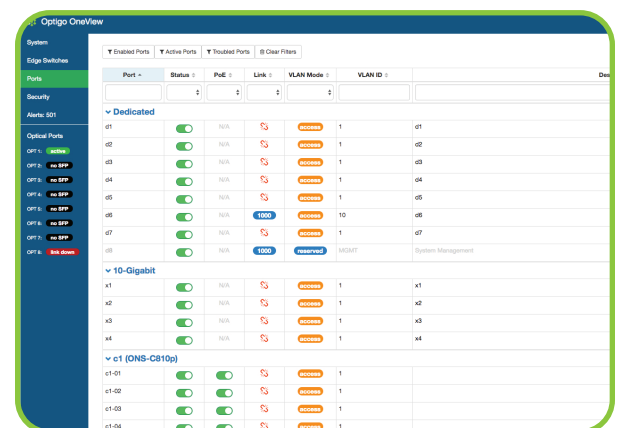
Industrial Optigo Connect edge switches bring the OT network right to the devices. These fanless switches can be DIN rail-mounted in a cabinet or panel alongside building automation, security, and IoT devices. Industrial Optigo Connect switches can share power supplies with other devices, and support redundant power supplies. The industrial nature of these switches means they are capable of withstanding more environmental variations than a rack-mounted switch.



Optigo Connect Edge Switches

Product highlights

- **A versatile selection** of edge switches. With various sizes and mounting options, there is one for every application.
- **Flexible uplink architecture** to match the footprint of any smart building.
- **Save space and cable costs** with efficient and flexible network topologies.
- **Centrally manage PoE+¹, VLAN, IP addresses, and routing** settings with the Optigo OneView Dashboard.
- **Supports protocols** in use for security, building automation, and Internet-of-Things (IoT).
- **Ethernet, multi-mode and single-mode fiber** capability with Optigo Connect Spectra and Hybrid solutions.^{2,3}



Optigo OneView Software

Product Specifications



ONS-CD0840GP



ONS-C801pi



ONS-C1601pi



ONS-CR2420GT



ONS-CR2440XP



ONS-C4801p

PORTS AND PHYSICAL CHARACTERISTICS						
RJ45 PORTS (MBPS)	8 x 10/100	8 x 10/100	16 x 10/100	24 x 10/100/1000	24 x 10/100/1000	48 x 10/100/1000
UPLINK PORTS	4 x SFP			2 x SFP	4 x SFP+	4 x SFP
POE SPEC	802.3at and 802.3af			N/A	802.3at and 802.3af	
POE BUDGET	240W			N/A	370W	740W
UNIT POWER	48-57 VDC, 240W	Dual 48 VDC, 360W		100-240 VAC, 14W	100-240 VAC, 449.46W – 432.77W	100-240 VAC, 900W
POWER SUPPLY	Sold separately ACC-PS-48V240W ACC-PS-24V10W ⁴	Sold separately (ACC-PS-48V300W), supports 1 or 2 (for redundancy)		Internal		
OPERATING TEMPERATURE	-40°C ~ 75°C (-40°F ~ 167°F)	-40°C ~ 75°C (-40°F ~ 167°F)	-20°C ~ 60°C (-4°F ~ 140°F)	0°C ~ 50°C (32°F ~ 122°F)	0°C ~ 50°C (32°F ~ 122°F)	0°C ~ 50°C (32°F ~ 122°F)
DIMENSIONS	62 x 135 x 130 mm 2.4" x 5.3" x 5.1"	74 x 105 x 152 mm 2.9" x 4.1" x 6.0"	74 x 135 x 152 mm 2.9" x 5.3" x 6.0"	280 x 166 x 44 mm 11" x 6.5" x 1.7"	442 x 211 x 44 mm 17.4" x 8.3" x 1.7"	440 x 410 x 44 mm 18" x 16" x 1.7"
WEIGHT	1.0 kg (2.2 lb)	0.9 kg (2.0 lb)	1.2 kg (2.6 lb)	2.5 kg (5.5 lb)	3.8 kg (8.36 lb)	6.4 kg (14.2 lb)
MOUNTING	DIN			Rack		
CERTIFICATIONS	UL, CE, RoHS, FCC	CE, RoHS, FCC	CE, RoHS, FCC	UL, CE, RoHS	UL, CE, RoHS	UL, CE, RCM, RoHS, FCC
WARRANTY	1 Year					
NETWORKING FEATURES						
SWITCHING	24 Gbps	9.6 Gbps	11.2 Gbps	52 Gbps	128 Gbps	104 Gbps
LOOP DETECTION	IEEE 802.1w RSTP					
VLAN	IEEE 802.1q VLAN up to 128 (VLAN ID: 1 - 4092) – Configurable per port in Trunk or Access mode					
MAC ADDRESS AUTHORIZATION	127 per switch 127 per port	56 per switch 7 per port	112 per switch 7 per port	380 per switch 380 per port	250 per switch 250 per port	256 per switch 127 per port
SFP REQUIREMENT	ONS-CX-SFP for Spectra solution; ONS-CU-SFP for Hybrid solution					
HYBRID AGGREGATION SWITCH	Yes	Yes	No	Yes	Yes	No

¹ ONS-CR2420GT does not natively support PoE+.

² In the Optigo Connect Hybrid solution, which supports ethernet cabling, multi-mode fiber, single-mode fiber, or mixed cabling, an ONS-C801pi, ONS-CR2420GT, or ONS-CR2440XP may serve as the Aggregation Switch.

³ The Network Controller (ONS-NC600) allows users to connect to Optigo OneView to manage their networks for either the Optigo Connect Spectra or Hybrid solutions. For more information, please refer to the Optigo Connect Hybrid solution datasheet, available at optigo.net/tech-spec-sheets.

⁴ When PoE+ is not required, the ACC-PS-48V240W power supply may be used. In such cases, it is recommended to disable POE+ on all ports.